

SINCE 2008

VAISHNAVI ENGINEERING WORKS

MR. ANAND JAYSWAL



ISO Certified - 9001:2015

www.vaishnaviengineeringworks.com

COMPANY OVERVIEW

WITH A STAFF OF OVER 55, OUR EXPERIENCED TEAM IS EMBEDDED WITH A WIDE RANGE OF SKILLS AND ABILITIES, ENABLING US TO MEET ANY CHALLENGE IN OUR FIELD. WE STRIVE FOR EXCELLENCE IN CLIENT RELATIONSHIPS AND PROVISION OF SERVICE. WE UNDERTAKE PRODUCTS IN A MANNER THAT PROVIDES VALUE TO OUR CLIENTS BY AT ALL TIMES TRYING TO EXCEED THEIR EXPECTATIONS. TO REACH OUR OBJECTIVES WE PLAN, IMPLEMENT WHICH FACILITATE THE MANAGEMENT OF QUALITY ON OUR PRODUCTS BY IMPLEMENTING THE FOLLOWING PRINCIPLES. COMPLY WITH ALL RELEVANT STATUTORY AND CONTRACTUAL OBLIGATIONS. CONFORM TO RECOGNIZED STANDARDS. MAINTAIN EXCELLENT COMMUNICATION WITH CLIENTS. CONTINUALLY IMPROVE OUR SERVICES THROUGH REVIEW OF OUR GOALS AND OBJECTIVES. CONTINUALLY IMPROVE THE SKILLS AND COMPETENCIES OF OUR WORKFORCE. THESE PRINCIPLES ARE INCORPORATED INTO OUR BUSINESS PLANNING PROCESS TO PROVIDE THE FRAMEWORK FOR THE DELIVERY OF QUALITY SERVICE TO OUR CLIENTS.



CHAIRMAN
MR. ANAND JAYSWAL

COMPANY OVERVIEW

SINCE 2008 WE HAVE BUILT A STABLE WORKFORCE WITH LARGE NUMBER OF COMPANY EMPLOYEE BEING 'LONG TERM EMPLOYEE" WITH TRUST, LOYALTY AND COMMITMENT, BY WHICH WE CAN PROVIDE A PROFESSIONAL QUALITY SERVICE ON TIME AND IN BUDGET.

WE OPERATE FROM MODERN FACILITY WITH DESIGN AND DRAFTING DEPARTMENT , FITTING AND MACHINE SHOP ,WELDING BAYS , FABRICATION AND ASSEMBLY AREAS.



BUSINESS PLAN

DIVERSE INDUSTRY AND SPECIFIC
EXPERIENCE. ONSITE ASSEMBLY
RIGGING AND CRANE CAPABILITIES

DELIVERING A SOLUTION TO RECOGNIZED
NEED. PROFESSIONAL ENGINEERING,
INFORMATION COLLECTION,
ORGANIZATION, STORAGE AND RETRIEVAL

INSTALLATION

DESIGN

ENGINEERING

QUALITY CONTROL

DRAFTING

QUALITY ASSURANCE PROCESS.
FINAL CHECK HAS TO BE DONE
BEFORE THE DISPATCHED

MANUFACTURE

COMPLETE DRAFTING SOLUTION FROM
CONCEPT DRAWING TO DETAILED
WORKSHOP DRAWINGS 2D AUTOCAD.

WORKSHOP - FITTINGS AND
MACHINING, WELDING FABRICATIONS
AND ASSEMBLY HYDRAULIC
COMPONENTS. PACKAGING
MACHINE PARTS

DESIGN & DRAFTING

PRODUCT ENGINEERING TEAM CONSISTS:

- A PROFESSIONAL MECHANICAL ENGINEER
- AN EXPERIENCED PLANNER & ESTIMATOR
- EXPERIENCED DRAFTSPERSONS



OUR EXPERTISE EXTENDS TO:

ONSITE TROUBLE SHOOTING
SITE SUPERVISION OF PROJECTS
PROJECT SPECIFICATIONS
WORK METHOD STATEMENTS
MANUFACTURERS DATA RECORD
CALCULATIONS & PREPARATION OF SPECIFICATIONS
DRAFTING
DIMENSIONAL AUTOCAD
3DIMENSIONAL SOLID MONITORING
GENERAL ARRANGEMENT AND LAYOUT DRAWING
FABRICATION DRAWING

CNC BANDING MACHINE



CNC LASER CUTTING MACHINE



EXAMPLES:



WORKSHOP SERVICES

1. FABRICATION DEPARTMENT

A PROCESS OF CONSTRUCTING PRODUCTS BY COMBINING TYPICALLY STANDARDISED PARTS USING ONE OR MORE INDIVIDUAL PROCESS. IN OUR COMPANY WE ARE HAVING SOLID TEAM CONSIST OF WELDER, FITTER, HELPER, BUFFER, GRINDER MAN AND OTHERS. WE ARE HAVING FACILITY OF GAS METAL ARC WELDING, METAL INERT GAS WELDING, ARGON WELDING, GAS CUTTER, PLASMA, NUMBERS OF GRINDERS. ALL THE TEAM MEMBERS ARE HIGHLY EXPERIENCED IN THESE PARTICULAR DEPARTMENT RESPECTIVELY.

AS A PART OF INFRASTRUCTURE WE HAVE 5000 SQ. FT. & SEPARATE SPACE IN GIDC MAKARPURA WE HAVE 05 TON CAPACITY OF HOIST CRANE. WE HAVE WORKED 36 HR, ONSITE, ON EACH FESTIVE SEASON SO THAT WE CAN PROVIDE ON TIME DELIVERY EVERY TIME AND THAT'S OUR MILLSTONE!!





WORKSHOP SERVICES

2. LATHE & MILLING DEPARTMENT

WE ARE HAVING ALL TYPES & SIZE OF LATHE & MILLING MACHINES CURRENTLY HAVING 10 NO. OF LATHE MACHINE, 06 NO. DRO MILLING MACHINE, 12 DRILLING MACHINE IN OUR COMPANY.

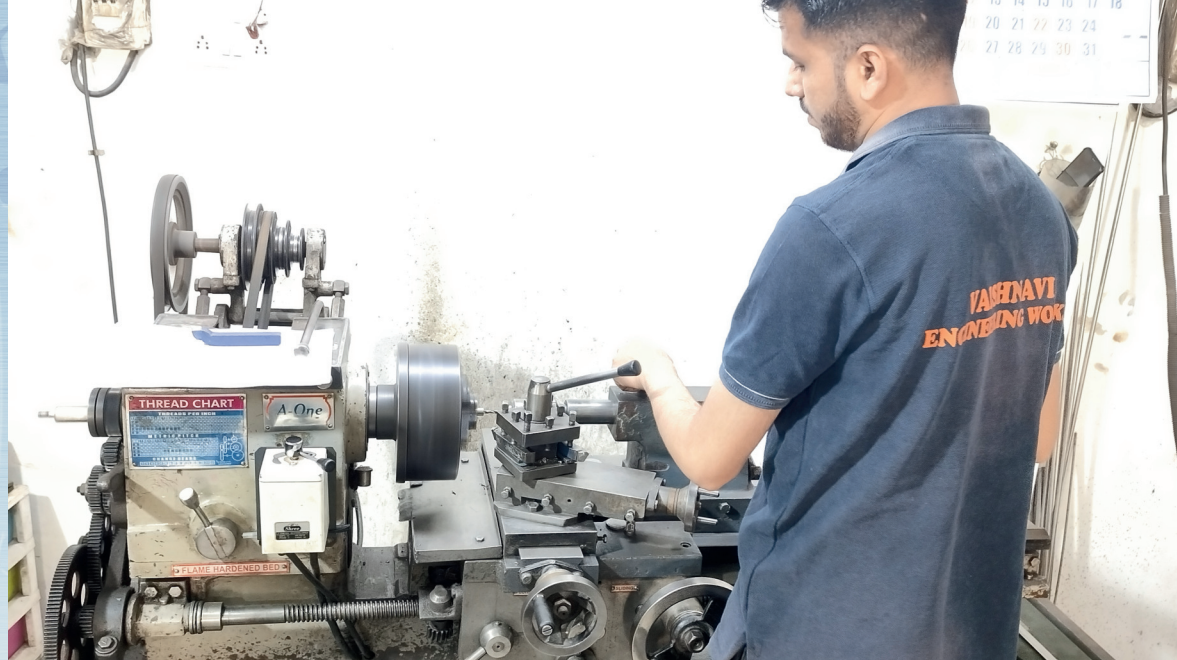
ALL THE TEAM MEMBER ARE VERY EXPERIENCED IN WORKING. EVERYONE KNOWS THE WORKING OF INSTRUMENTS SUCH AS BORE GAUGE, MICROMETRE, PLUG GAUGE, RING GAUGE, VERNIER CALLIPER, DIAL GAUGE, ETC., WE MAINTAIN BEARING SIZES, FINISHING, LENGTH ETC. WHICH ARE CRITICAL BUT WE PREPARE THEM WELL AND WE DON'T REWORK IN OUR PARTS.

WE HAVE ENOUGH SPACE & FULL LIGHT, FAN FACILITY SO THAT ALL TEAM MEMBERS GET SUFFICIENT BENEFIT.

WE ALWAYS DELIVER MATERIAL ON GIVEN TIME, AS
WE HAVE ALL THE COMMON PARTS IN STOCK.

WE ALWAYS FOCUS ON THE RESEARCH OF THE PARTS SO THAT WE COULD GIVE MAXIMUM BENEFIT TO THE CLIENT. WE ARE ALWAYS READY TO FACE CHALLENGES FOR THE NEW PARTS DEVELOPMENT AND WE HAVE SIGNIFICANTLY GIVEN EXCELLENT RESULT IN NPD DEPARTMENT IN QUICK AND FASTER RESPONSE UNDER THE GIVEN TIME INTERVAL.

OUR TEAM MEMBER ARE YOUNG AND ENERGETIC THAT GIVE US
MORE CONFIDENCE TO TARGET THE MAXIMUM PARTS.



WORKSHOP SERVICES

3. LATHE, VMC, CNC & SHAPING

IN OUR WORKSHOP WE ARE HAVING A VERY BIG LATHE MACHINE WITH THE SPAM LENGTH OF 3000MM AND OUTER DIAMETER TO 300MM. WE HAVE MANUFACTURED BIG ROLLERS WHICH ARE USED IN THE CONVEYOR SYSTEM OF BIG PACKAGING MACHINE. WE HAVE OPERATOR FOR THIS MACHINE IS HAVING 12 YEARS OF EXPERIENCE & FULL KNOWLEDGE OF DRAWING DIMENSION AND FINISHING. WE HAVE ALL NEW HIGH-TECH NEW GENERATION FROM REPUTED COMPANIES VMC & CNC PRESENT IN OUR COMPANY BOTH THE MACHINE'S SAYS A LOT IN TERMS OF PRECISION, QUALITY, SPEED. WE HAVE SEPARATE MACHINE PROGRAMMER AND OPERATOR FOR THE MACHINES RESPECTIVELY.

THUS, WE ARE HAVING ALL THE PROCESS IN-HOUSE ITSELF WHICH DIRECTLY RESULTS A VERY STRONG COMPANY IN 3 TERMS
MAN, MACHINE & MATERIAL.

SHAPING MACHINE PLAYS MAJOR ROLE IN THE METAL INDUSTRIES. IT HELPS US IN GIVING A GOOD FINISHING & ACCURATE DIMENSION IN LESS TIME.

WE ARE HAVING AN INDIVIDUALLY OPERATORS FOR THE EACH MACHINE FOR BETTER ACCURACY AND FINISHING, CURRENTLY WORKING IN OUR COMPANY FOR 10-12 HOURS MINIMUM PER DAY OR EVEN MORE IN CASE OF ANY URGENCY.





ON-SITE SERVICES

AT VAISHNAVI ENGINEERING WORKS WE HAVE THE RESOURCES TO ENSURE SUCCESSFUL PROJECT COMPLETION AND CLIENT SATISFACTION. OUR GOAL IS TO BE SURE THAT THAT OUR CLIENTS PROJECTS PROGRESSES SMOOTHLY AND THAT ALL PROJECTS TIME FRAMES AND RESOURCES ARE MANGE AS EFFICIENTLY AND EFFECTIVELY AS POSSIBLE.



OUR STAFF ARE TRAINED AND COMPETENT IN ALL ONSITE REQUIREMENTS & SPECIFICATIONS.

SOME OF THE ONSITE SERVICES INCLUDES:

ONSITE LABOUR

MOBILE WELDING

ONSITE TOOL TRAILERS FULLY EQUIPPED

ONSITE TOOL CONTAINERS FULLY EQUIPPED

MOBILE CRANES

EXPERIENCED TEAM

OUR FITTERS, WELDERS, MACHINE OPERATORS ARE FULLY QUALIFIED AND ARE EXPERIENCED WITH ALL NECESSARY EQUIPMENT. OUR MACHINE SHOP IS FULLY EQUIPPED AND SERVICES BY OUR HIGHLY SKILLED TEAM OF MACHINIST. WE ARE HAVING ONLY EXPERIENCED PERSONS FOR THE JOB. WE ARRANGE THE MEETINGS TO DISCUSS THE JOB WHERE IT LEADS TO THE COST SAVING TO OUR CLIENTS, WE ALSO CONDUCT SPECIAL TRAINING FOR THE OPERATORS THROUGH WHICH WE CAN GET THE MAXIMUM OUTPUT AT LEAST TIME.



WE ALSO CONDUCT SPECIAL TRAINING FOR THE OPERATORS THROUGH WHICH WE CAN GET THE MAXIMUM OUTPUT AT LEAST TIME.

WE ARRANGE STAFF IN SUCH A WAY THAT NO TIME IS WASTED. WE ALSO ARRANGE PRODUCTION CYCLE IN A WAY THAT IT TAKES LESS TIME TO COMPLETE THE GIVEN JOB. WE ALSO UNDERTAKE THE MACHINE MAINTENANCE AT EVERY DAY AND WEEKLY AS WELL. WE ENSURE ALL THE SPARE PARTS WHILE BEFORE LEAVING FOR THE INSTALLATION OR SERVICES. WE ARE HAVING A GOOD EXPERIENCED ON-SITE PERSON WHICH CAN LEADS INTO MINIMUM TIME INTERVAL.

MATERIAL STORAGE

WE HAVE A HUGE STOCK IF THE RAW MATERIAL,
FINISH GOODS SUCH AS STAINLESS STEEL,
MILD STEEL, ALUMINIUM ETC.

WE BUY REGULAR SIZES, SHAPE & MATERIAL
WHICH ARE BEING USED FREQUENTLY IT
HELPS US IN EMERGENCY.



LIST OF MACHINERIES

<u>MACHINE NAME</u>	<u>QUANTITY</u>	<u>CAPACITY</u>
CNC TURNING	1	300 X 700
VMC MACHINE	2	800 X 1000
DRO MILLING LATHE	6	1280 X 280
DRO LATHE	2	3000 X 600
LATHE	3	1500 X 250
LATHE	4	800 X 200
DRILL MACHINE	12	25 X 40
SHAPING MACHINE	4	600 X 1000
ARGON WELDING MACHINE	3	500 AMP
BENCH VISECH	2	200

LIST OF MACHINERIES

<u>MACHINE NAME</u>	<u>QUANTITY</u>	<u>CAPACITY</u>
MIG WELDING MACHINE	9	500 AMP
ARC WELDING MACHINE	3	300 AMP
CRANE	1	5 TON
DISC CUNG MACHINE	4	150
HAND GRINDER	15	150
HEXO CUTTING	3	250
SCREW MACHINE	2	10
BENCH GRINDER	2	-
CNC BANDING MACHINE	1	12 MM - 3 MTR
CNC LASER CUTTING MACHINE	1	2500 X 6500

OUR PRODUCTS

BEARING HOUSING

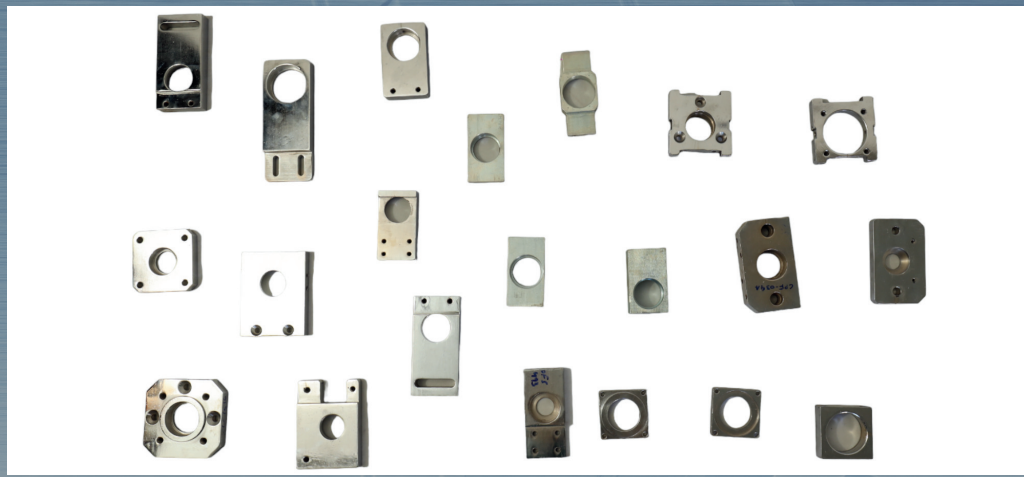
THIS TYPE OF BEARING HOUSING SUPPORTS YOUR BEARING PROTECT THEM FROM CONTAMINANTS WHILE KEEPING IN LUBRICANTS. WE ARE THE MANUFACTURING OF BEARING HOUSING AS PER THE DESIGN PROVIDED BY THE CLIENTS. THIS TYPE OF HOUSING IS USED BY ALL THE MACHINE MANUFACTURING INDUSTRIES. THIS TYPE OF HOUSING CAN ALSO USE IN MONITORING EQUIPMENT'S THEY PROVIDE CUSTOMIZABLE MOUNTED BEARING SOLUTION & HELP MAXIMIZE PERFORMANCE & SERVICE LIFE. THEY ENABLE THE INCORPORATED BEARING TO ACHIEVE MAXIMUM SERVICE LIFE WITH REDUCED MAINTENANCE EQUIPMENT'S. IS NEEDED.

BRACKETS

BRACKETS CAN SUPPORT MANY ARCHITECTURAL ITEMS. IT CAN BE USED TO SUPPORTING OR GRINDING SYSTEM IN RELATIVELY LONG OR VERNICLE COMPONENTS BRACKETS CAN BE USED TO SUPPORT. WE MANUFACTURED AS PER THE CLIENTS DESIGN WE CAN MANUFACTURE IN ALL THE MATERIAL WHICHEVER IS NEEDED.

CASCADE MOUNT BOOSTER CANOPY

TO PROVIDE SHELTER WE ARE OFFERING FUEL STATION CANOPIES AS THEY HELPS IN PROTECTION FROM HARSH SUNLIGHT & POURING RAIN. THESE BOOSTER STATIONS DO NOT HAVE CONNECTIVITY OF NATURAL GAS PIPELINES BUT HAVE BOOSTER COMPRESSOR FACILITY. AT THESE STATION GAS IS RECEIVED THROUGH THE MOBILE CASCADE FROM DIFFERENT STATION DIRECT FILLING OF GAS IS DONE THROUGH GAS DISPENSES & LATER BOOSTER COMPRESSOR IS USED TO BOOST THE PRESSURE & GAS IS DISPENSED IN AUTOMOBILE. WE HAVE SUCCESSFULLY DELIVERED MORE THAN 450 NO'S CANOPIES & 11000, DIFFERENT PARTS USED IN GAS STATION. WE HAVE DELIVERED ALL CANOPIES & SUB PARTS IN VERY QUICK TIME. WEATHER WE HAVE TO WORK IN 24HOURS, ONSITE ASSEMBLY, OR IN FESTIVE SEASON WE ARE ALWAYS READY TO DERIVE ON TIME & EVERY TIME. WE ARE HAVING A VERY LARGE HIGHLY SKILLED WELDERS, FITTER, HELPERS.



OUR PRODUCTS

CHAIN PARTS

THESE CHAIN PARTS ARE WIDELY USED IN THE PACKAGING MACHINE INDUSTRIES WHERE APPLICATION OF THE CHAIN IS TO MOVE FORWARD OR BACKWARD DIRECTIONS THERE ARE DIFFERENT PARTS SUCH AS CHAIN LUG, CHAIN BLOCK (BIG/SMALL) CHAIN HOOK, DELUXE LINK, SPRING LINK. WE ARE MANUFACTURING ON THE LARGE NUMBERS AS THEY ARE USED IN LARGE NUMBERS. WE ARE MANUFACTURING & STOCKIST OF THESE PARTS.

PLATES

THESE PLATES ARE USED TO GIVE THE STRENGTH SUPPORT TO THE STRUCTURES IT IS USED BY THEIR APPLICATIONS THERE ARE MANY TYPES OF STRUCTURE PLATES SUCH AS V-SHAPED PLATES, TAPERED PLATES THROUGH SHAPED FOLDING PLATES TO HYPED, FOLDING PLATES. WE ARE MANUFACTURE OF THESE PLATE. WE HAVE ALL IN-HOUSE FACILITY TO DEVELOP PLATES. MATERIAL USED IN THESE PLATES ARE ALUMINIUM, STAINLESS STEEL, MILD STEEL ETC.

OIL TANKS & WATER TANKS

THESE TANKS ARE USEFUL IN THE ENCLOSED CANOPY WHICH ARE WIDELY USED IN THE CNG GAS STATION WE ARE MANUFACTURING THESE TANKS AS PER THE CLIENTS.

BRASS LUG LEVER

BRASS LEVER & LUG ARE WIDELY USED IN THE SUBPARTS OF CHAIN AND IT IS USED IN PACKAGING MACHINE INDUSTRIES. THERE ARE VARIOUS TYPE, VARIOUS MATERIAL OF THE LUG AS PER THEIR APPLICATION IT IS USED. WE OFFER FULL ASSEMBLY OF THE STANDARD BRASS LEVER AND ALSO SUBPARTS AS PER CLIENT REQUIREMENT.

CANOPIES PARTS

IN THE CANOPIES PARTS SUCH AS ALUMINIUM BLOCK , ALUMINIUM T BLOCK , BELL HOUSING , ALUMINIUM MANIFOLD , STRUCTURE , SUPPORT , 1" BANJO , FLANGES , ADAPTER , RADIATOR FAN SUPPORT , WATER STAND , PRIORITY PANEL. WE ARE A LEADING MANUFACTURER OF OIL & GAS PARTS.

JAW, ZIGZAG & ENVIL CUTTER

JAW IS MAINLY USED IN THE PACKAGING MACHINE INDUSTRIES. THE PURPOSE OF THESE PART IS TO CUT THE RAPPER AS PER NEEDED. ZIGZAG & ENVIL CUTTER ARE ALSO USED TO CUT THE RAPPER AS PER THEIR NEED. WE ARE DIRECT MANUFACTURED OF THE JAW, ZIGZAG & ENVIL CUTTER AND STOCKIST OF THESE PARTS TOO. WE ALSO DEALS IN THE JAW SCREW WHICH COMES IN POINT AT THE END PART WHICH ARE MOST USED IN PACKAGING MACHINE INDUSTRIES.



OUR PRODUCTS

NIP ROLLER, CHAIN GUIDE & REEL HOLDER

NIP ROLLER IS THE MAIN PART OF THE PACKAGING MACHINE INDUSTRIES. IT PLAY'S ROLE OF ROLLING THE RAPPER THE MATERIAL USED IN STAINLESS STEEL, MILD STEEL AS PER REQUIREMENT WE DO PREPARE PARTS, THERE ARE MANY SIZES OF THESE ACCORDING TO NEED. CHAIN GUIDE HOLDS THE CONVEYOR SECTION AND PLAYS AN IMPORTANT ROLE IN PACKAGING MACHINE INDUSTRIES WE OFFERS DIFFERENT SIZE, TYPE AS PER THE CLIENT REQUIREMENT. REEL HOLDER USED TO HOLDS THE REEL USED BY PACKAGING MACHINE INDUSTRIES THERE ARE MANY DIFFERENT TYPES OF REEL HOLDERS AVAILABLE.

ROLLER AND PIPES

ROLLERS AND PIPE ARE WIDELY USED IN ANY INDUSTRIES WE ARE DIRECTLY MANUFACTURER OF THESE ROLLERS CURRENTLY WE ARE MANUFACTURING SIZE VARIES FROM 150MM TO 3500MM. MATERIAL USED IN THESE TYPE OF ROLLERS AND PIPES ARE STAINLESS STEEL, MILD STEEL, ALUMINIUM. THESE TYPE OF ROLLERS AND PIPE ARE WIDELY USED IN THE PACKAGING MACHINE INDUSTRIES.

RODS

RODS ARE BEING VERY DIFFERENT TYPES THEY ARE USED IN THE CONVEYOR SYSTEM, ROLLING SYSTEM THERE ARE TYPES AS RODS SUCH AS CONVEYOR ROD, SPRING TYPE ROD AND TOP TRANSFER ROD, THERE ARE MANY DIFFERENT LENGTH AVAILABLE IN THESE RODS.

SHAFTING

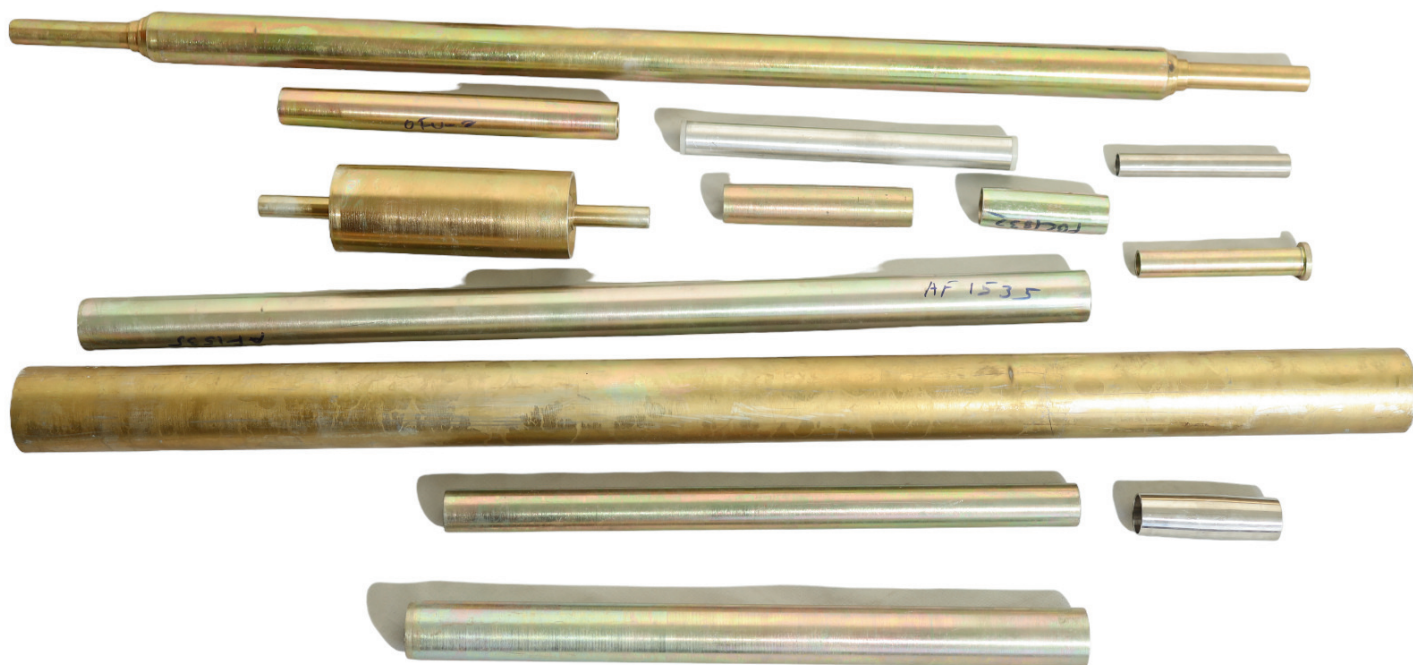
SHAFTING'S PLAYS MAIN ROLE FOR ANY INDUSTRIES. THESE SHAFTING'S ARE DEFINES AS COMPONENTS THAT TRANSFER ROTATIONAL POWER FROM ONE PART TO ANOTHER. WE DO OFFER CRANKSHAFT, SPINDLE SHAFT, LINEAR SHAFT, AXLE SHAFT AND MANY OTHERS AS PER THEIR APPLICATION THEY ARE BEING MANUFACTURED.

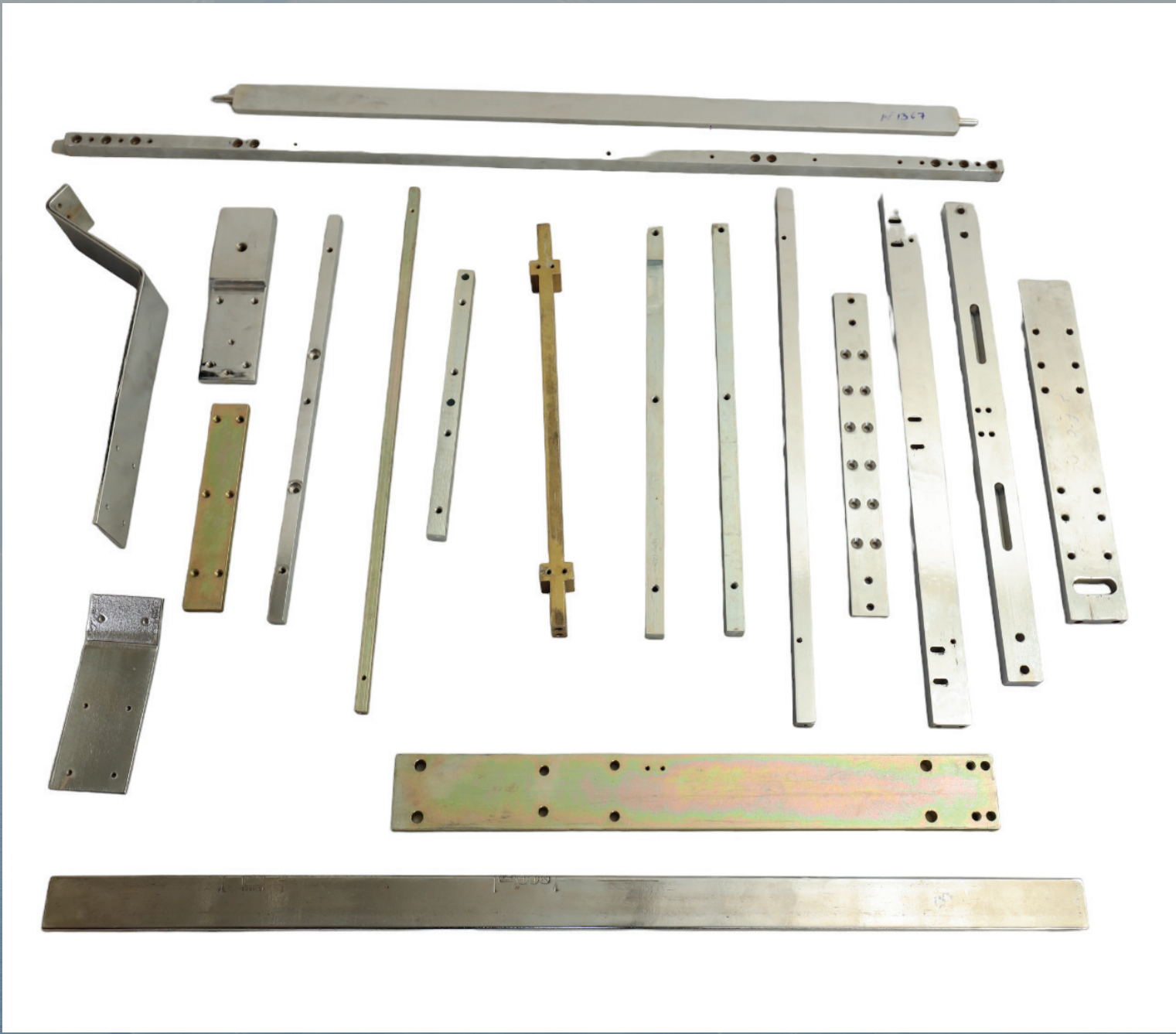
MATERIAL USED IN THESE MANUFACTURER ARE:

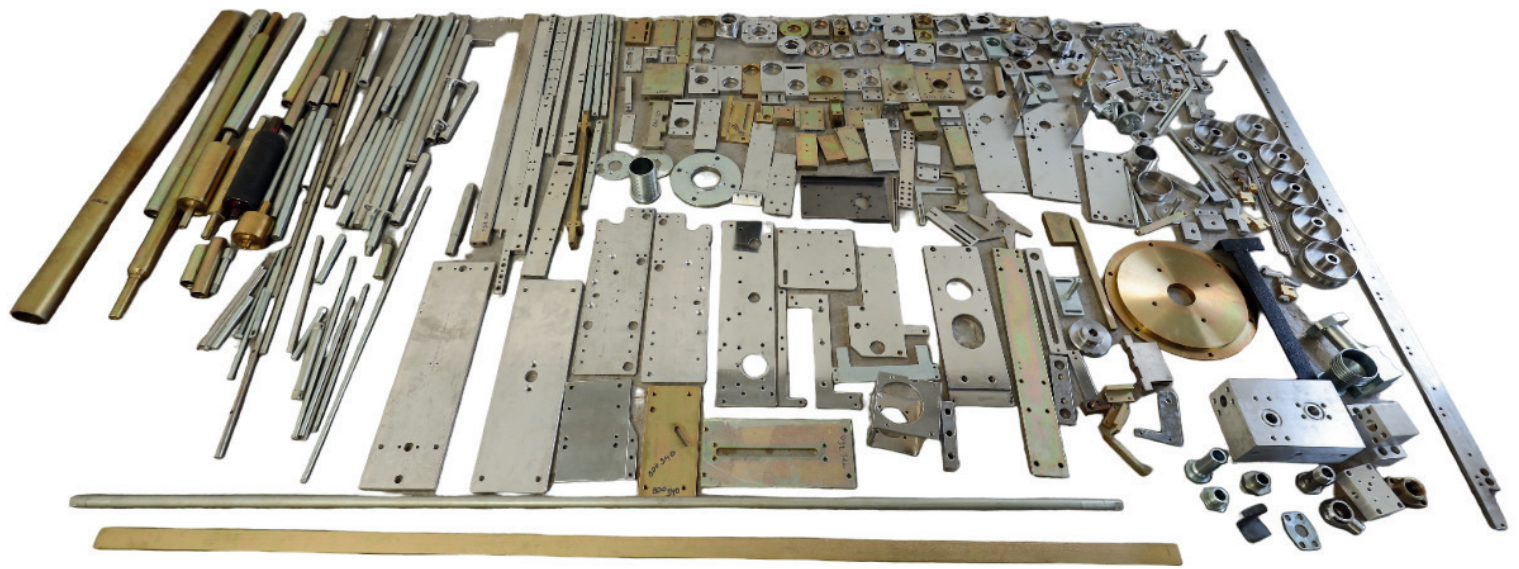
EN-08, EN-019, EN-031, SS 304, SS 304L, SS316, SS 303, M.S ETC.

SEALING ROLLERS AND PROPELLING ROLLERS

THESE TYPE OF ROLLERS AND BEING WIDELY USED IN THE PACKAGING MACHINE INDUSTRIES. WE DO OFFER MANY ROLLERS ACCORDING TO THEIR SERRATION THEY ARE DIFFERENT. WE ARE MANUFACTURER AND STOCKIST OF THESE ROLLERS.







STRENGTHS & GOALS

LOCATION OF BUSINESS.

QUALITY PROCESS AND PROCEDURES

DIVERSE PROFITABLE PRODUCTS

SOLID LEADERSHIP

INVESTMENT IN HUMAN CAPITAL AND TECHNICAL SKILL

DIRECT ACCESS TO AND TIMELY DELIVERY OF PARTS

MATERIAL AND EQUIPMENT

WORK CLOSELY WITH CLIENTS TO UNDERSTAND THE

INDUSTRY AND ITS DEMAND.

COMPETITIVE PRICING AND SERVICES

STRENGTHEN CLIENTS LOYALTY

INCREASE EMPLOYEE SATISFACTIONS



CONTINUE IMPROVING DESIGN, DRAFTING, PRODUCTION AND DELIVERY PROCESS TO MAINTAIN

SINCE 2008

"PERFECTION
IS OUR PROFESSION"



+91 9427956196



A/2 748/9/C2 G.I.D.C MAKARPURA, BARODA - 390010



SERVICE@VAISHNAVIENGINEERINGWORKS.COM

INFO@VAISHNAVIENGINEERINGWORKS.COM

ANANDJAYSWAL07@GMAIL.COM